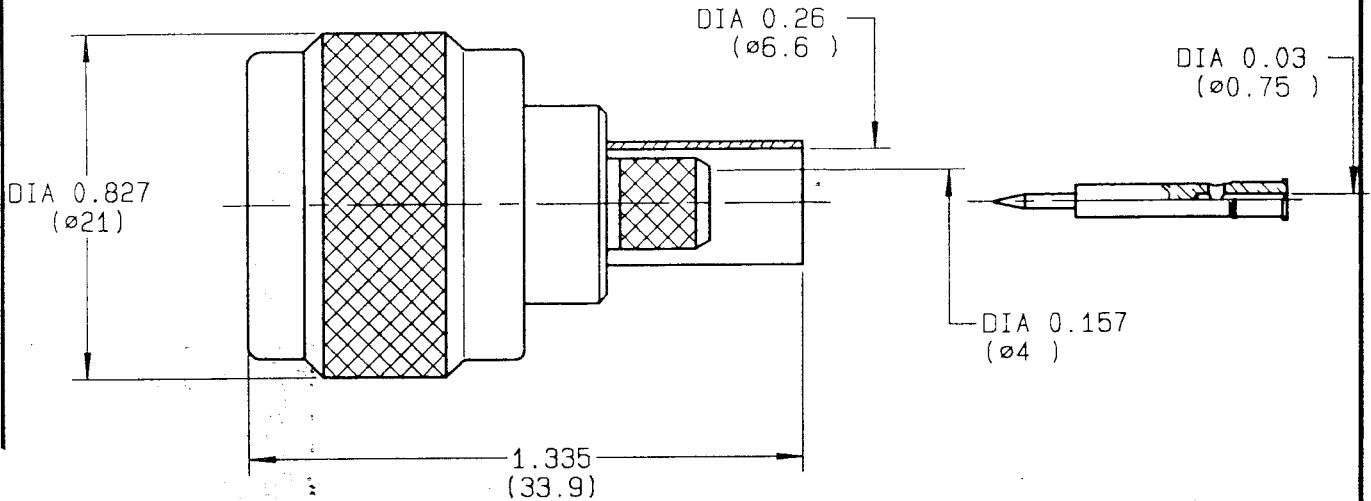


**STRAIGHT PLUG FULL CRIMP-TYPE  
CABLE 6/75 S**

**R162.084.000**  
**SERIES N 75**



NOMINAL IMPEDANCE	75 $\Omega$	CABLES : KX 6A
FREQUENCY RANGE	0-1.5 GHz	RG 59
TEMPERATURE RATING	-55/+155 °C	
V.S.W.R	1.06 + x F(GHz)Maxi	
RF INSERTION LOSS	0.15 $\sqrt{F}$ (GHz) dB Maxi	
VOLTAGE RATING	850 Veff Maxi	
DIELECTRIC WITHSTANDING VOLTAGE	1500 Veff Mini	
INSULATION RESISTANCE	5000 M $\Omega$ Mini	OTHERS CHARACTERISTICS
HERMETIC SEAL	NA Atm.cm <sup>3</sup> /s	CABLE RETENTION
LEAKAGE (pressurized only)	NA	200 N Mini
MCHANICAL DURABILITY	500 Cycles	CENTER CONTACT RETENTION
WEIGHT	26.5 gr	Axial force - mating end
SPECIFICATION		27 N Mini
		Axial force - opposite end
		27 N Mini
		Torque
		NA cm.N Mini
		RECOMMENDED TORQUES
		Mating
		130 cm.N
		Panel nut
		NA cm.N
		Clamp nut
		NA cm.N

CONNECTOR PARTS	MATERIALS	FINISH	(all values are given ) in micrometers
BODY	BRASS	BBR 2	
OUTER CONTACT	BRASS	BBR 2	
CENTER CONTACT	BRASS	GOLD 0.5 OVER NICKEL 2	
INSULATOR	PTFE	-	
GASKET	SILICONE RUBBER	-	
OTHERS PIECES	BRASS	BBR 2	

ISSUE	CREATION DATE	FILE PART-NUMBER
9813C01	10-OCT-94	EPC 96-07



GAUT.

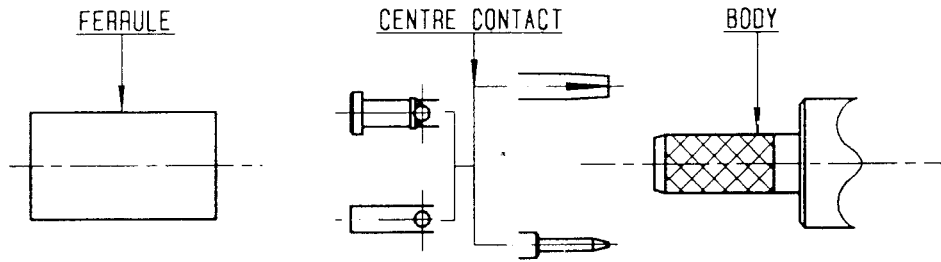
The information given here is subject to change without notice.  
Design changes may be in order to improve the product .

*Connect to the future*



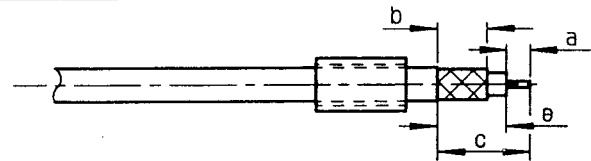
**R162.084.000**

ISSUE 9813C01 SERIES N 75



①

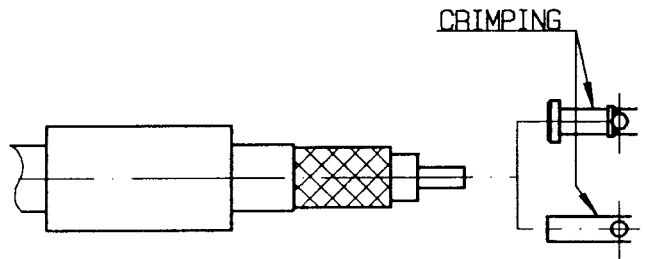
Slide onto the cable the ferrule  
Strip the cable .



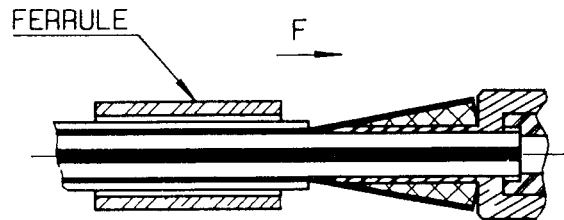
Stripping	a	b	c	d	e
inch	0.177	0.315	0.551	0	0.374
mm	4.5	8	14		9.5

②

Slide on centre contact until it bottoms against cable dielectrique .  
Crimp centre contact .  
Crimping tool : R282 223 000 ( Hex. : 0.068 )  
or R282 293 000 ( M22520/5-01 )  
+ dies R282 235 011 ( M22520/5-11 ) .

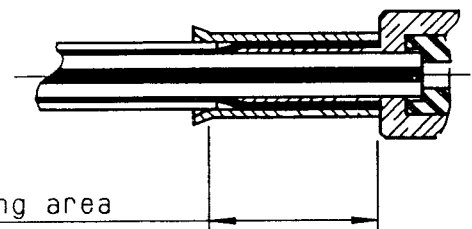


Fan the braid .  
Slide cable into the body until bottoms against insulator .  
Slide ferrule over the braid .  
(In direction F)



④

Crimp the ferrule with crimping tool R 282 223 000 ( Hex. : 0.255 ) or crimping tool R282 293 000 ( M22520/5-01 )  
+ dies R282 235 013 ( M22520/5-13 )  
Cut the excess of braid .



Crimping area